



Advanced Marine Beacon System

Fugro Pelagos Inc. has been providing marine beacon system software, that is in use worldwide, for over eight years. Using our experience developing proven systems, we have designed the Advanced Marine Beacon System, a completely new software system that has a highly scalable architecture and incorporates new technologies.

The Advanced Marine Beacon System implements the RTCM standards for differential marine NAVSTAR GPS Reference Stations and Integrity Monitors (RSIM).

Applications:

- Control of differential GPS Reference Stations, associated Integrity Monitor and Transmitter
- Remote monitoring of one or multiple Reference Stations

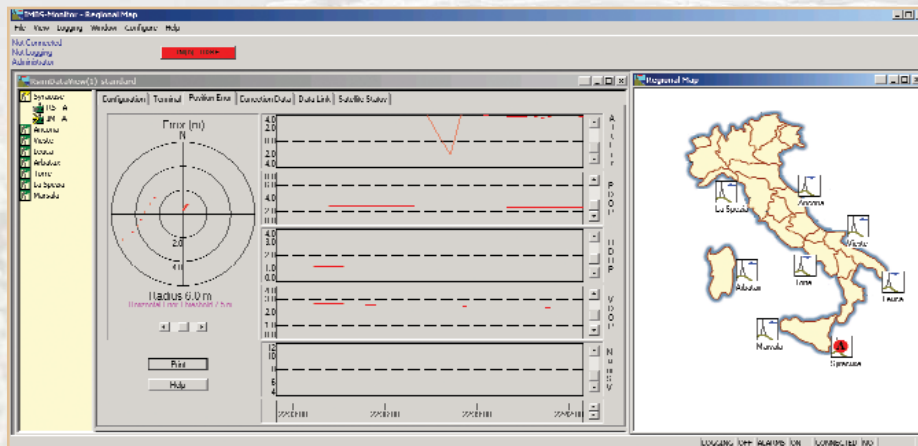
Features:

- Full support for RTCM recommended standards for differential NAVSTAR GPS Reference Station and Integrity Monitors (RSIM) version 1.1
- Three application modes: Control Station, Central Monitoring Station and Local Monitoring Station based on a consistent user interface
- Control of a Reference Station from a Central Monitoring Station or Local Monitoring Station
- Flexible device and communication configuration without fixed limits on the number of devices or stations that can be used

- Support for Control Station/Monitor Station communication via LAN/WAN and dial up
- Data logging to standard Microsoft Access database with integrated SQL query wizard
- Comprehensive set of quality indication graphs
- Real-time terminal window for each device
- Supports numerous alarm actions including: Monitor Station call-up, automatic email and receiver reset; if two hardware banks are available (RS, IM and TX), an alarm action to switch banks can occur
- User configurable alarm actions
- Easily translated to different languages
- The user configures all the hardware and controls operations through tabs on a single window

Benefits:

- Configuration versatility allows the system to be extended and reconfigured easily and without artificial constraints
- Intuitive and consistent user interface makes the software easy to learn
- Logged data can be loaded directly into Microsoft Access or Excel to create specialized reports and graphs
- An Integrity Monitor or Reference Station receiver can be added to a Monitor Station allowing local integrity monitoring
- Once set up, the software is designed to operate in a completely autonomous mode



Fugro Pelagos, Inc.
3738 Ruffin Road · San Diego · California · 92123
Tel: +1 858 427 2005 · Fax: +1 858 292 5308

www.fugro-pelagos.com